

Evidence

A Billion Footsteps

Far or near, migration is a fact of life.
BY VICKI SANDERS

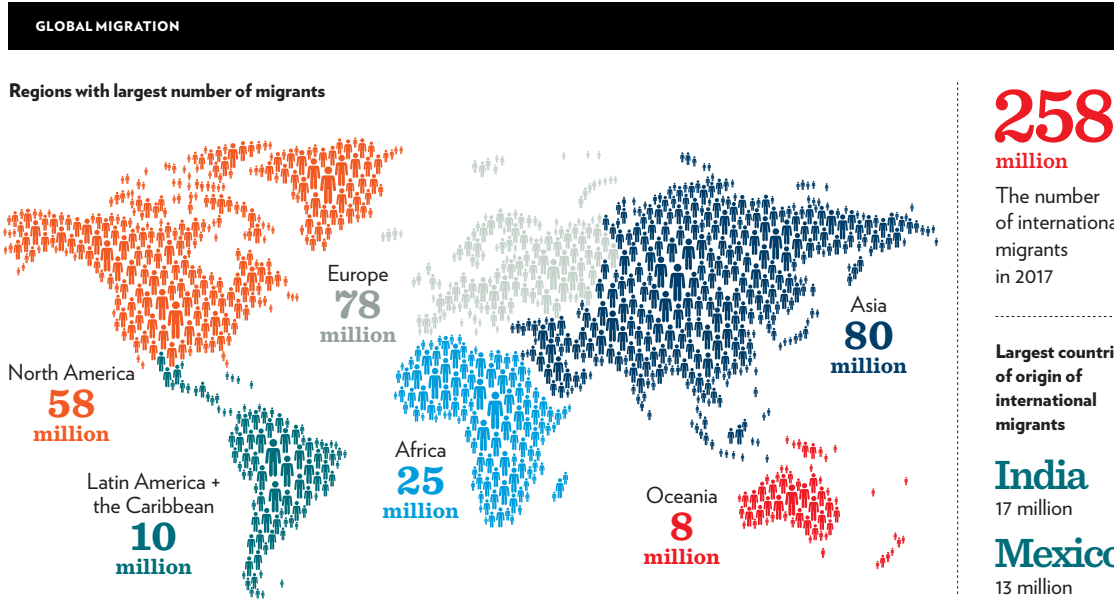
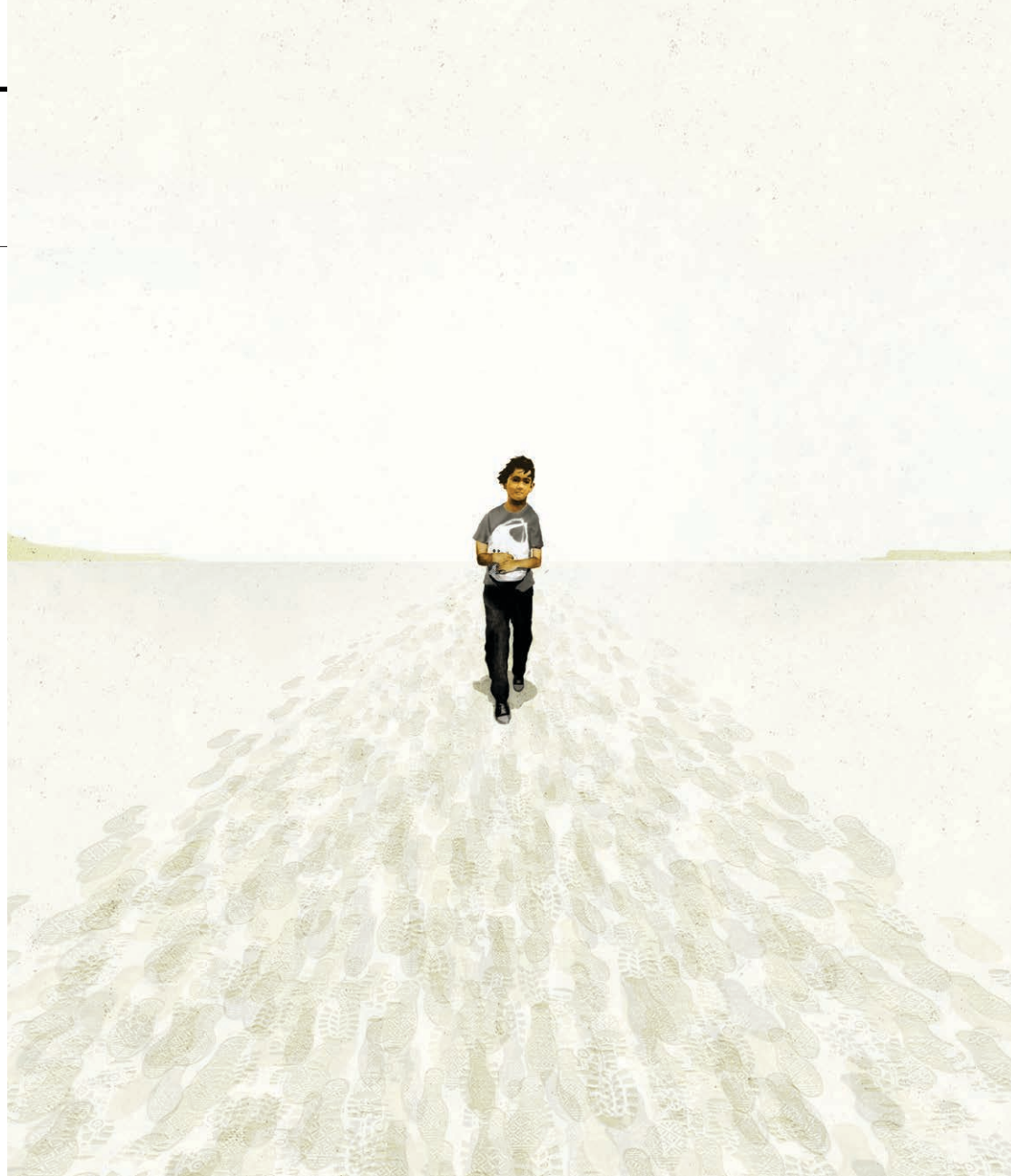
Inspired by the article about Professor Daniel Kanstroom's latest book, *Deportation World* (page 10), *BC Law Magazine* decided to collect some related data on migration and immigration. The intention was to provide a graphical and statistical snapshot of movement trends around the world, including in America, that have an impact on deportation and result in a host of other outcomes involving migration, immigration, apprehension, and deaths.

Immigration is an almost impossibly complex phenomenon that touches, in obvious and subtle ways, every human being on the planet. It concerns where and how we live, what we eat, who governs our nations, how we treat our neighbors, how we write our laws, the languages we speak, the clothes we wear, the religions we practice, the people we marry, and the children we raise, among others.

Truth be told, we will never stop moving. Our very nature compels us to look to the next horizon, seek firmer ground, and acquire what we need to keep ourselves and our species alive. In this, we are all alike. And we are certainly not alone.

It behooves us, then, to consider with compassion and wise measures those who knock on the doors of lands that are safer and more stable than those they've left behind by force or desperation or even in search of opportunity.

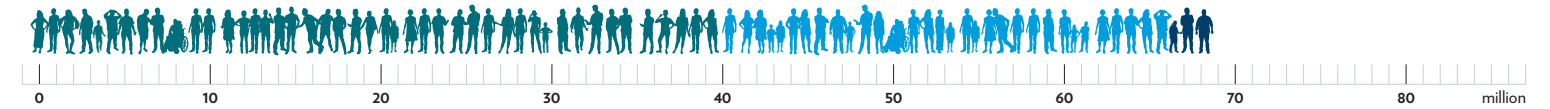
The data here remind us of the sheer numbers of the migration phenomenon. What they don't express is the heart it will take for us all to make room for one another.



DESPERATION MIGRATION

The Displaced

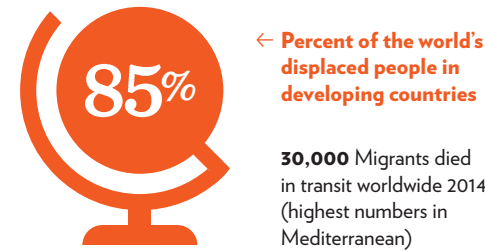
68.5 million The number of forcibly displaced people worldwide



40 million
Internally displaced people

25.4 million
Refugees

3.1 million
Asylum-seekers



DEPORTATIONS • APPREHENSIONS

European Union
672,000 Non-EU citizens returned outside of EU 2015-2017

Mexico
380,000 Illegal immigrants apprehended 2015-2016 (90% were from Central America)

160,000 People deported in 2015

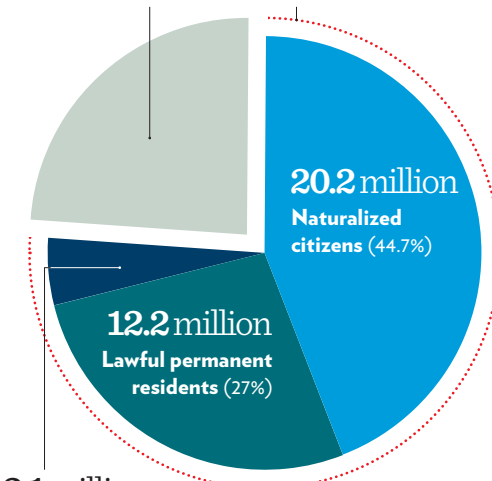
Since 2015, substantially more Central Americans have been deported annually from Mexico than from the United States

United States
400,000 Removals of unauthorized immigrants 2018

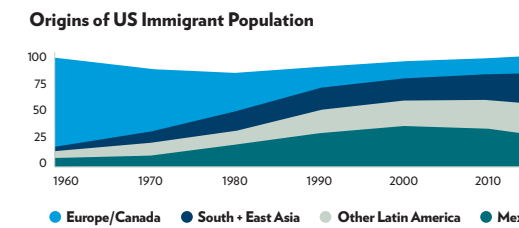
UNITED STATES IMMIGRATION

45.1 million US Foreign-Born Population (2016 estimates)

10.7 million Unauthorized immigrants (23.7%)
34.4 million Lawful immigrants (76.3%)



2.1 million Temporary lawful immigrants (4.6%)



Estimated number of refugees and asylum-seekers in the US

623,000 1995
265,000 2010
815,000 2017

Budgets + Personnel (as of 2016)

\$263 Billion

Federal spending on enforcement since 1986 immigration overhaul

\$18 Billion+

Annual budgets for US immigration agencies, ICE, and Customs and Border Protection

10x

Increase in US Border Patrol budget since 1993, from \$363 million to \$3.8 billion

49,000+

Number of border and interior enforcement personnel